

BenQ

LinkPro

User's Manual

Copyright

Copyright 2006 by BenQ Corporation. All rights reserved. No part of this publication may be reproduced, transmitted, transcribed, stored in a retrieval system or translated into any language or computer language, in any form or by any means, electronic, mechanical, magnetic, optical, chemical, manual or otherwise, without the prior written permission of BenQ Corporation.

Disclaimer

BenQ Corporation makes no representations or warranties, either expressed or implied, with respect to the contents hereof and specifically disclaims any warranties, merchantability or fitness for any particular purpose. Further, BenQ Corporation reserves the right to revise this publication and to make changes from time to time in the contents hereof without obligation of this company to notify any person of such revision or changes.

Licensing

Wireless Wizard: BenQ Desktop/Notebook Software (Drivers and associated Applications) for BenQ wireless modules

SOFTWARE LICENSE AGREEMENT FOR BenQ Products:

IMPORTANT READ CAREFULLY: This BenQ Software License Agreement ("SLA") is a legal agreement between you (either an individual or a single entity) and BenQ Corporation ("BenQ") for the BenQ software product identified above, which includes computer software and associated media and printed materials, and may include "online" or electronic documentation ("SOFTWARE PRODUCT" or "SOFTWARE"). By installing, copying, or otherwise using the Wireless Wizard, you agree to be bound by the terms of the SLA.

SOFTWARE PRODUCT LICENSE:

The Wireless Wizard is protected by copyright laws and international copyright treaties, as well as other intellectual property laws and treaties. The Wireless Wizard is licensed, not sold.

1. GRANT OF LICENSE.

This SLA grants you the rights to install, use, access, or otherwise interact with ("RUN") ONE copy of the SOFTWARE per computer used in conjunction with the BenQ hardware product which it is designed to work with.

2. CONDITIONS.

You may not modify, reverse engineer, decompile, or disassemble the Wireless Wizard.

The Wireless Wizard is licensed as a single product. Its component parts may not be separated for use.

You may permanently transfer all of your rights under this SLA, provided you retain no copies, you transfer all of the Wireless Wizard and the associated hardware (including all component parts, the media and printed materials, any upgrades, this SLA) and the recipient agrees to the terms of this SLA.

3. TERMINATION.

Without prejudice to any statutory or other rights you may have, BenQ may terminate this SLA if you fail to comply with the terms and conditions of this SLA. In such event, you must destroy all copies of the Wireless Wizard and all of its component parts.

4. COPYRIGHT.

All rights, title and interest, including all copyrights and other intellectual property and proprietary rights, in and to the Wireless Wizard (including but not limited to any images, photographs, animations, video, audio, music, text, and "applets," incorporated into the Wireless Wizard), the accompanying printed materials,

and any copies of the Wireless Wizard, are owned by BenQ or its suppliers. The Wireless Wizard is protected by copyright laws and international treaty provisions. Therefore, you must treat the Wireless Wizard like any other copyrighted material. You may not copy Wireless Wizard or the printed materials accompanying the Wireless Wizard.

iv Table of Contents

Overview	7
Shipping contents	7
LinkPro exterior view	8
System requirements	8
Computer specifications	8
Projector	8
Preparation and Installation	9
Overview	9
Preparing your projector for connection	9
Preparing your computer for wireless connection ...	11
Checking the TCP/IP settings of your computer .	11
Installing the Wireless Wizard to your computer	13
Making Connections and Presentations	15
About wireless connection modes and channels	15
Making wireless connection	16
Making cable connection	23
Controlling presentation	28
Disconnecting	31
Uninstallation	32
Uninstalling the Wireless Wizard Software Driver ..	32
Detaching LinkPro	32
Troubleshooting	33

<memo>

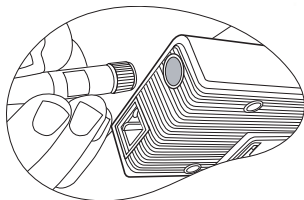
1 Overview

Shipping contents

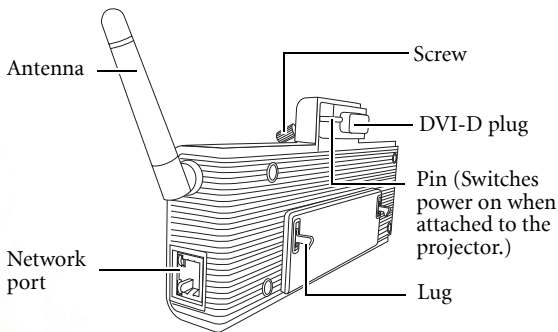
Carefully unpack and verify that you have all of the items shown below. If any of these items are missing, please contact your place of purchase.

- LinkPro (wireless module)
- Antenna
- User's Manual & Wireless Wizard software CD-ROM
- User's Manual

 **Screw the antenna to LinkPro.**



LinkPro exterior view



System requirements

In order to display presentations by using LinkPro and Wireless Wizard, it is necessary to have a LAN or Wireless LAN (WLAN or Wi-Fi) enabled computer (PC or Notebook) loaded with the Wireless Wizard software, and a BenQ projector attached with LinkPro. The minimum system requirements are:

Computer specifications

- Windows 2000 or XP (Home or Pro edition)
- CD-ROM drive
- Embedded/Add-on Wireless or LAN capability

Projector

Compatible with BenQ MP720/MP620/MP720p/MP770 Digital Projectors

2 Preparation and Installation

Overview

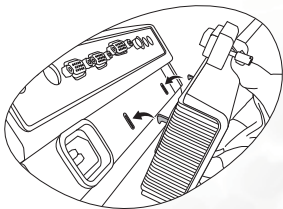
The Wireless Wizard software can be used to connect with suitably configured BenQ projectors with LinkPro installed.

The process takes three steps.

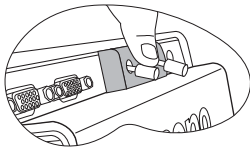
1. Prepare the projector for connection by installing LinkPro to it.
2. Prepare your computer for connection.
3. Use Wireless Wizard to connect the computer to the projector. (See Chapter 3 on page 15.)

Preparing your projector for connection

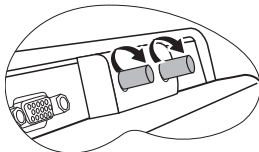
1. Ensure the projector is free from any cables. (This makes more room for the next step without interfering with cables.)
2. As illustrated, hold the projector slightly up and attach LinkPro to the projector by aligning the lugs on LinkPro with two small slots on the projector.



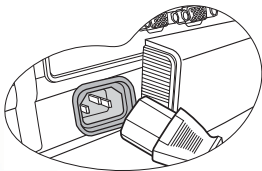
3. Press the DVI plug to fit into the DVI socket on the projector.



4. Secure the screws.



5. Connect a power cord to the projector and a wall socket. Turn on the projector. (You may refer to the projector user's manual for details about starting up the projector.)



6. Once the projector is started, you see a searching display similar to this:




If the display shows N/A as in the Wireless Connection section like below, it means the projector doesn't detect LinkPro. To find out the problem and solution, see ["Cannot project an image" on page 33](#).




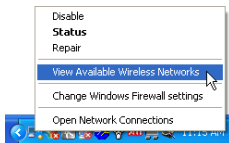
Preparing your computer for wireless connection

Checking the TCP/IP settings of your computer

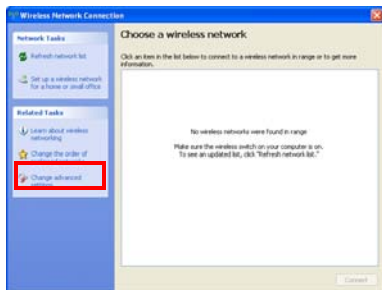
In order for the projector to connect to your computer successfully, your computer must allow automatic IP and DNS address assignment in TCP/IP settings. Follow the steps below to check if the TCP/IP settings of your computer are correctly set.

 **If provided, use the wireless connection application specifically designed for your wireless card to configure settings.**

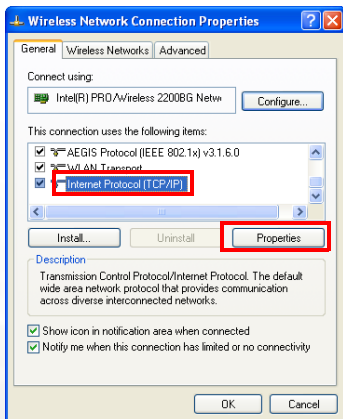
1. Right-click the Wireless connection  icon on Windows Taskbar, and then select **View Available Wireless Networks** in the menu that appears.



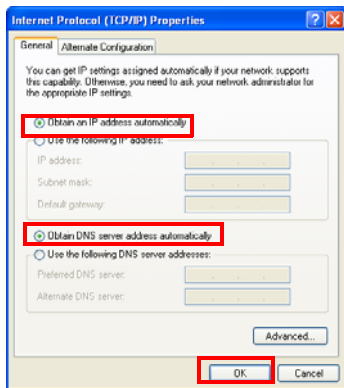
2. The Wireless Network Connection window will pop up. Click **Change advanced settings** to continue.



3. In the window that follows, click **Internet Protocol (TCP/IP)** and then the **Properties** button.



4. Make sure that **Obtain an IP address automatically** and **Obtain DNS server address automatically** are selected, and then click the **OK** button.



Installing the Wireless Wizard to your computer

In order to get your computer ready for connection to the projector, you need to install the Wireless Wizard.

Pre-installation Check

1. Check that your system meets the system requirements for operating system and hardware requirements described under ["System requirements" on page 8](#).
2. Ensure you have sufficient privileges to install software.
3. Ensure you have un-installed any previously installed BenQ Wireless Wizard software. See ["Uninstallation" on page 32](#) for removing the software.

Installation

1. Close any other applications being run.
2. Insert the Wireless Wizard software CD into the CD drive of your computer. The software installation menu will display on-screen.



If installation does not begin automatically, browse the CD using Windows Explorer and double-click Setup.exe to begin installation.

3. Click **Install Wireless Wizard** and follow the on-screen instructions to proceed.
4. Restart your computer after you complete the installation.
5. After Wireless Wizard is successfully installed, the shortcut icon will be created on the Desktop.

3 Making Connections and Presentations

About wireless connection modes and channels

Your projector is compatible with the three most popular wireless local area network (Wireless LAN or WLAN) standards defined by IEEE (Institute of Electrical and Electronics Engineers): 802.11 a, 802.11 b and 802.11 g. These standards are referred to in this manual as wireless connection modes.

The 802.11 b mode has a maximum raw data transfer rate of 11 Mbit per second (Mbps), while the 802.11 g mode has a faster speed of 54 Mbps, and is backward compatible with the 802.11 b mode. The 802.11 a mode also allows 54 Mbps data transmission, but operates at a different band and is not backward compatible with the 802.11 b and 802.11 g modes. You need to use the **MODE** button on the projector, or the **SWAP** button on the remote control to select a mode that supported by the computer you want to connect.

In order to prevent interference when multiple wireless connections are used in close proximity, each wireless connection mode allows operation in different channels. For example, two 802.11 b networks can work simultaneously without interference under different channels. You can use the **AUTO** button on the projector or remote control to select a channel. Note that the channels that are available for use in a particular country differ according to the regulations of that country.

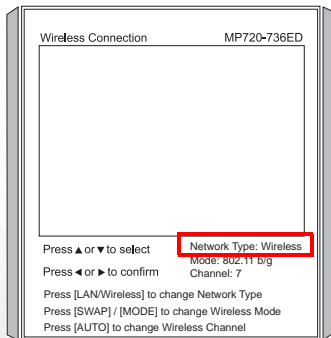
Although multiple computers can be connected to the same projector through LinkPro, it is not recommended that your laptop computer be connected to more than one wireless module simultaneously.




- **Wireless Wizard does not support DirectX applications (e.g. games). Running these applications will cause the system to become unstable.**
- **Wireless Wizard only supports a fixed resolution of 1024 x 768 @ 60Hz (XGA).**
- **Executing Wireless Wizard will temporarily stop Wireless Zero Configuration (WZC) service.**

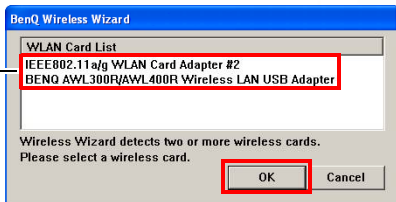
Making wireless connection

1. Make sure that the distance between the computer(s) and projector is within 20 meters (64 feet) and the network cable(s) has been removed if the Network Type has been previously used as **LAN**.
2. Press the **Source** button repeatedly to switch the input source to **Wireless**.
3. The following Wireless Connection menu will display. If not, press the **LAN/Wireless** button on the remote control once or twice to select the Wireless Connection menu. Make sure the network type is **Wireless**.



4. Turn on your computer's wireless function. For more information on how to do this, please refer to the documentation of your computer.
5. Double-click on the  icon on Windows Desktop, or click Windows **Start** button and select **(All) Programs -> BenQ Wireless Wizard--MP Series -> BenQ Wireless Wizard--MP Series** to open Wireless Wizard. If there are multiple wireless network cards installed on the computer, the following dialog will display prompting you to select a card to use. Click to select a wireless network card from the dialog and then click the **OK** button.

Click to select a wireless network card from the list

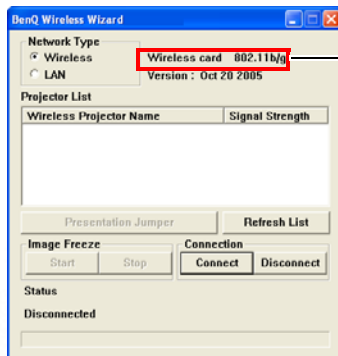


6. The Wireless Wizard window will follow. Set the Network Type to **Wireless**.



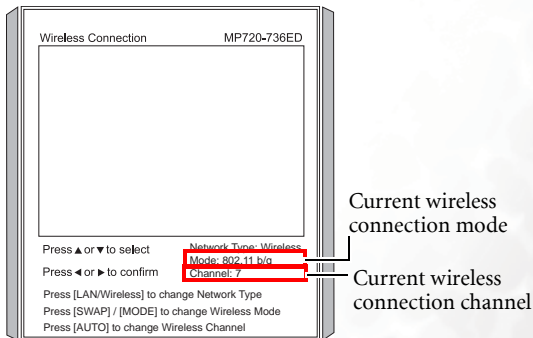
Inconsistent settings of Network Type between your computer and the module may cause connection failure.

7. Wireless Wizard will detect the wireless capability of your computer (or the wireless network adapter selected in step 5) and display it in the window.



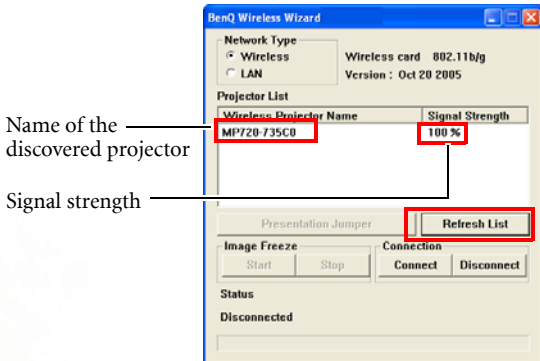
The wireless capability of your computer


8. According to the wireless capability of your computer, press the **MODE** button on the projector or **SWAP/Wireless** button on the remote control to change wireless connection to a suitable mode. The selected mode will display on the projected Wireless Connection menu. Current wireless connection channel will also display. The Wireless Connection menu is available in multi-languages. You can change it into other language after an image is projected. Press the **MENU** button on the remote control or projector. Set your familiar language in **Advance > Language**. For details about the operation of on-screen display (OSD) menus, refer to the projector's user's manual. The OSD system will not work when the Wireless Connection menu is displayed.



- The 802.11 a mode may not be available on the projectors sold in certain countries/areas due to local regulations.
- When selecting wireless channel, it is recommended that you choose from between channel 1 and channel 7.

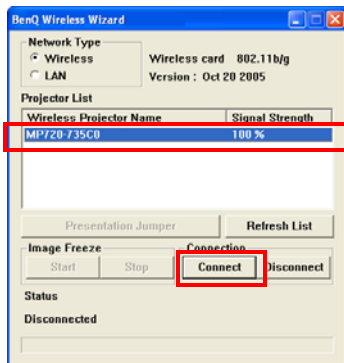
9. When the projector is discovered by the computer, the name of the projector and signal strength will appear in the Wireless Wizard window on the computer. If it doesn't, click the **Refresh List** button to try again.



 If the projector still can't be found, check the following:

- Is the computer too far away from the projector? Move the computer closer to the projector and click the Refresh List button in the Wireless Wizard window to try again.
- Are there other wireless networks nearby? Press the AUTO button to change wireless connection to a different channel and try again.
- Are the TCP/IP settings correctly set? Refer to ["Checking the TCP/IP settings of your computer" on page 11](#) for details.

10. Click on the name of the discovered projector and then click the **Connect** button.



The display resolution of your computer screen will be set to 1024 x 768 automatically to match that of the projector (distortion of image on computer screen may occur, but it will not affect the projected image).

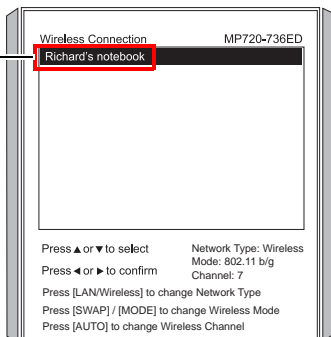
11. The computer will start connecting to the projector. This may take a few seconds.
12. Repeat Step 2 - Step 6 if you want to establish wireless connections to the projector on other computers. You can connect up to 10 computers to the projector.



In this Wireless network type, the projector detects and displays the images from computers that connect wirelessly. Other computers that connect to the projector via network cables will not show in the Wireless Connection list in the next step.



13. The projector will display a list of all computers currently connected to the projector.

Name of the
connected
computer



The connection status will also display in the Wireless Wizard window on the computer.



The Wireless Wizard icon on Windows Taskbar will also turn from  to  to indicate the status.

14. Press the ▲ or ▼ button on the projector or remote control to select the computer you wish to connect in the projected Wireless Connection menu, and then press the ◀ or ▶ button to use the image from the connected computer.

Alternatively, if no connected computer is currently projecting, you can click the **Presentation Jumper** button in the Wireless Wizard window to have the projector display the image from the computer directly.



When presenting, static screen JPEG images are captured on the computer and sent to the projector for display. This necessarily involves some processing power on the computer. This format is unsuitable for movies and large animated graphics. They will appear jerky.

Audio is also not supported via connections through LinkPro. If you need to play sound through the projector, please see the projector's documentation for details.

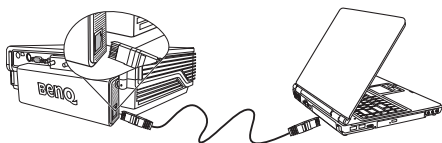
Making cable connection

What if your computer(s) is not equipped with Wireless LAN card/adaptor?

The LinkPro also makes connection possible via network cable(s). With commercially available Ethernet 100/10BaseT network cable(s), you can connect one computer to the projector at a time, or allow multiple computers access the projector at the same time. The connection path should be like one of the illustrations on the next page.

■ One computer to the projector

Connect one end of the network cable to the network port on LinkPro and the other end to the same port on your computer.

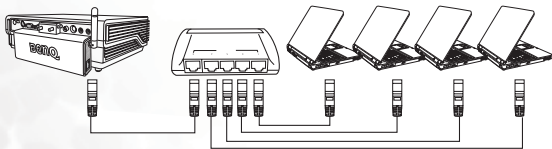


■ Multiple computers to the projector

Depending on how many computers to be connected, several network cables and a switch hub are required. Make sure the switch hub is turned on.

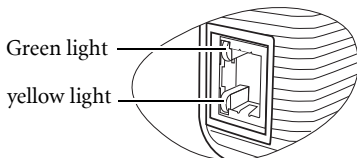
Connect one end of the network cable to the network port on LinkPro and the other end to one of the switch hub's network ports.


Take the other cable; connect one end to the switch hub's network port and the other end to the computer's network port. Repeat this step until all of the presenters' computers are connected.



Once you have set up you computer(s) and projector by following one of the methods mentioned above, please continue to the following steps for connection.

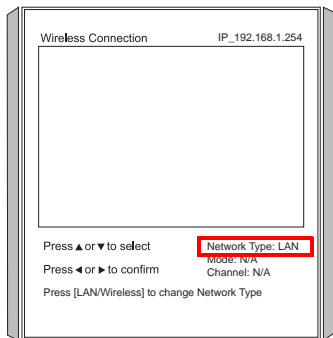
1. Make sure both the projector and computer(s) are turned on, and the yellow light on LinkPro's network port is on.




 **The green light on LinkPro's network port will be flashing in the following steps whenever data transmission occurs between the projector and computer(s).**


2. Press the **LAN/Wireless** button on the remote control once or twice to select the Wireless Connection menu. Make sure the network type is **LAN**.

The Wireless Connection menu is available in multi-languages. See page 19 for details.

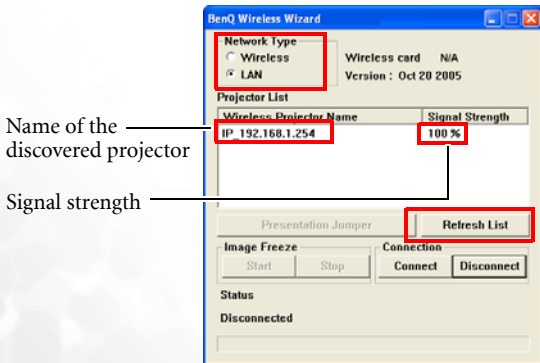


3. Double-click on the  icon on Windows Desktop, or click Windows **Start** button and select **(All) Programs -> BenQ Wireless Wizard -> BenQ Wireless Wizard** to open Wireless Wizard.

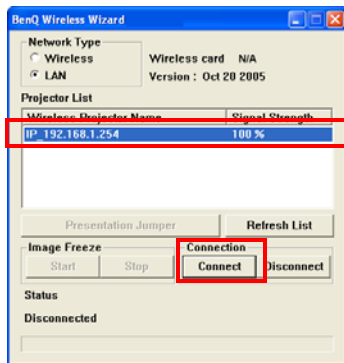
 **Be sure to close the previous Wireless Wizard window and reopen it if your computer has wireless capability and just connected to the projector wirelessly.**

To close the Wireless Wizard window, click  (Close) on the top-right corner.


4. The Wireless Wizard window will follow. Set the Network Type to **LAN**.
5. When the projector is discovered by the computer, the name of the projector and signal strength will appear in the Wireless Wizard window on the computer. If it doesn't, click the **Refresh List** button to try again.



- Click on the name of the discovered projector and then click the **Connect** button.



- The computer will start connecting to the projector. This may take a few seconds.
- Repeat Step 2 - Step 6 if you want to establish connections to the projector on other computers. You can connect up to 10 computers to the projector.

 In this LAN network type, the projector detects and displays the images from computers that connect via network cable(s). Other computers that connect to the projector wirelessly will not show in the Wireless Connection list in the next step.

- Refer to steps 13 and 14 on page 22 for the remainder of the procedure.

Controlling presentation

Freezing image

To freeze the image during a wireless presentation, click the Image Freeze **Start** button in the Wireless Wizard window. To release the function, click the Image Freeze **Stop** button.

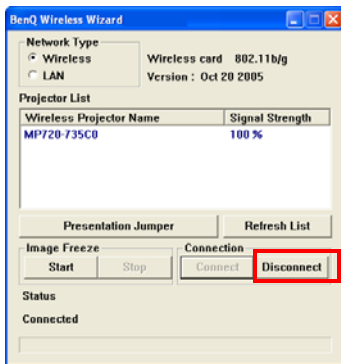


Swapping presenter

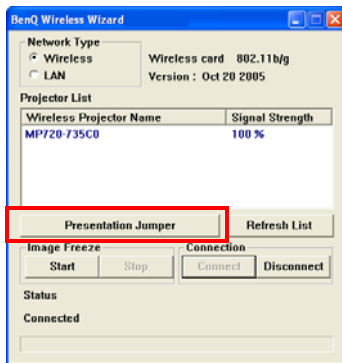
If there are multiple computers connected to the projector, you can use this function to swap projector display among these computers.

■ Method 1: Computer control

1. On the current presenter's computer, click the **Disconnect** button in the Wireless Wizard window.



2. On the next presenter's computer, click the **Presentation Jumper** button in the Wireless Wizard window.

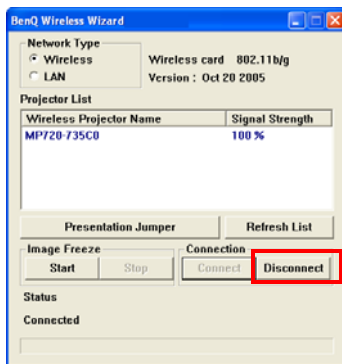


■ Method 2: Projector control


1. Press **LAN/Wireless** on the remote control or **Source** on the projector to display the Wireless Connection menu.
2. Press the **▲** or **▼** button on the projector or remote control to select the next presenter's computer in the Wireless Connection menu, and then press the **◀** or **▶** button to project.

Disconnecting

To disconnect the projector from a computer, click the **Disconnect** button in the Wireless Wizard window.



The display resolution of your computer screen will return from 1024 x 768 to its original setting.

To exit the Wireless Wizard window, click  (Close) on the top-right corner.

4 Uninstallation

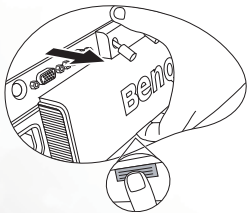
Uninstalling the Wireless Wizard Software Driver

When updating software versions, it is recommended that you remove the previous software drivers prior to installing the new version.

1. Open **Add or Remove Programs** in Control Panel.
2. Click **Change or Remove Programs**, and then select **BenQ Wireless Wizard** to remove. Click the **Change/Remove** button.
3. Click **'Yes'** in the **Confirm Uninstall** dialogue box.
4. The uninstallation is finished. The shortcut icon on Windows Desktop is also removed.

Detaching LinkPro

1. Make sure the projector is turned off.
2. Loosen the screws.
3. Hold the projector slightly up, and detach LinkPro from the projector while pressing the release button on the bottom of LinkPro.



5 Troubleshooting

? Cannot project an image

Cause	Remedy
The projector doesn't detect LinkPro.	<ul style="list-style-type: none">■ Make sure your projector is turned on.■ Make sure the LinkPro is securely attached to the projector.■ Check whether the pin is damaged.

? Unable to use wireless connection.

Cause	Remedy
The network types on the projector and computer do not match.	Press LAN/Wireless on the remote control once or twice to select Wireless network in the Wireless connection menu, and set the Network Type to Wireless on the Wireless Wizard window.
The wireless connection modes between the projector and computer do not match.	Change the wireless connection mode on the projector by pressing the SWAP/Wireless button on the remote control or MODE on the projector according to the wireless capability of your computer.

The wireless settings are not properly configured.	Check the wireless settings of your computer. See "Preparing your computer for wireless connection" on page 11 for details.
The wireless signal is too weak.	Move the computer to a location with better signal reception.
There are other wireless networks nearby.	Press the AUTO button to change wireless connection to a different channel and try again.
The network cable(s) is attached to LinkPro.	Unplug the network cable(s) from LinkPro and re-establish wireless connection.

⑦ **Unable to use LAN connection.**

Cause	Remedy
The network types on the projector and computer do not match.	Press LAN/Wireless on the remote control once or twice to select LAN network in the Wireless connection menu, and set the Network Type to LAN on the Wireless Wizard window.
The switch hub used to connect to the projector and computers are not on.	Connect your hub to a power outlet and switch it on (if necessary).

The network cable(s) is not securely connected to the network ports.	Re-connect the network cable(s) to the network ports.
The LAN network connection is problematic.	Re-connect the LAN connection through the Wireless Wizard.